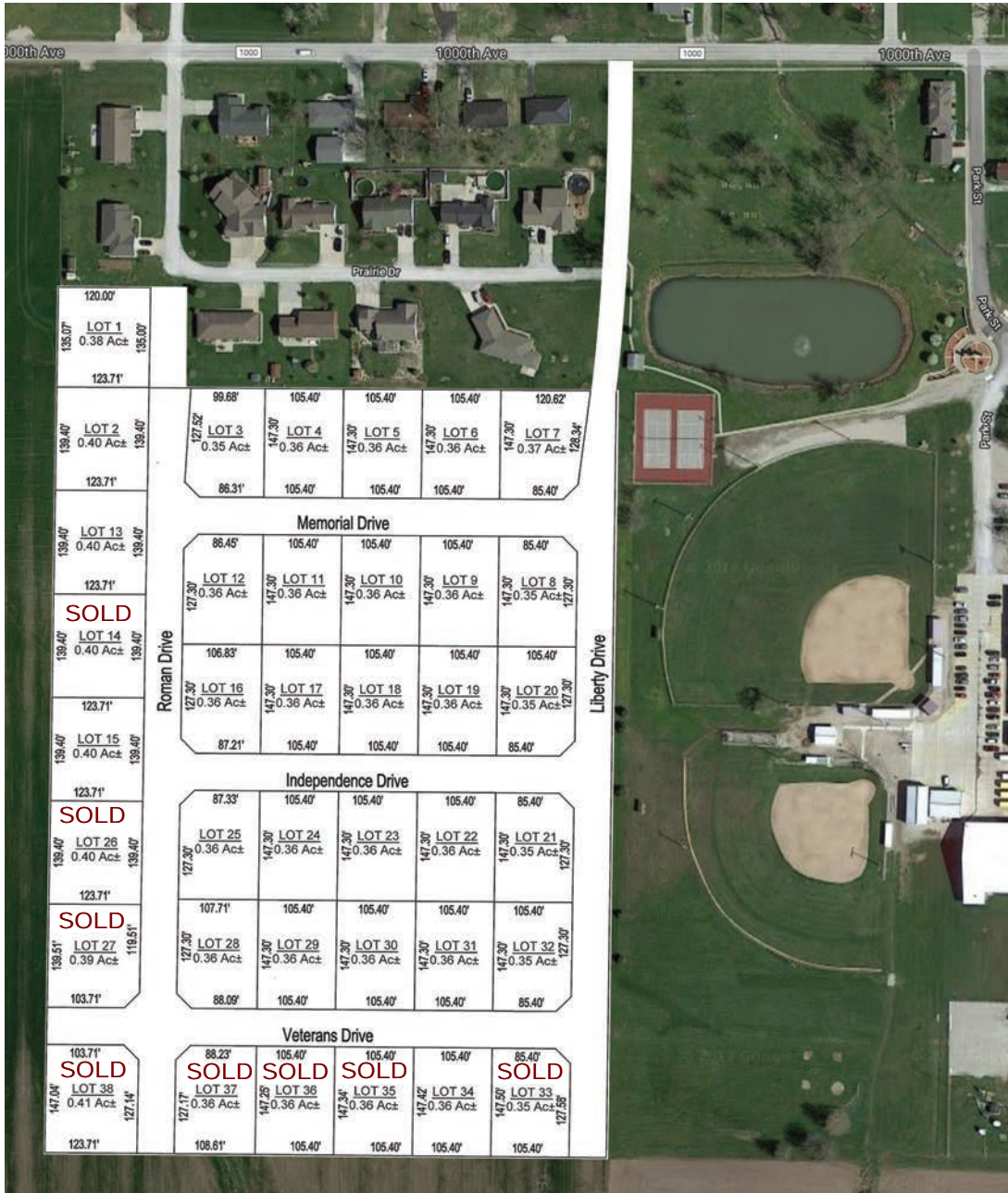


NEW! HARTKE SUBDIVISION

LOTS ARE AVAILABLE FOR SALE!

Sign a purchase agreement, pick out your lot and put down earnest money today!
 Property closings will not be until all of the infrastructure (roads & utilities) are complete.



38 Lots

Sizes Range:
0.35 -0.40 acres

Close Proximity to
the park & school!

Utilities Available:

- * water
- * sewer
- * storm sewer
- * gas
- * electric
- * phone
- * television
- * internet

\$4,000

Per Lot

No Contractor
Spec Pricing



www.dieterichillinois.com

109 N. MAIN ST. DIETERICH, IL 62424

217.925.5410 - 217.925.5557 (FAX)

Email: villagehall@dieterichillinois.com

